

# The Monitor

Voice of the Twin State Radio Club

September 2009



## Message from the President

Over the years that I've been a ham I have enjoyed many aspects of the hobby. Building things, talking around the world and helping out in times of need have been key elements for me.

Recently I realized what is actually the most important part of ham radio: hams themselves. It has been my distinct pleasure to have met and spent time with many, many wonderful people throughout the years. This fact came home powerfully recently when I was facing some very difficult times in my personal life. Having the personal relationships with folks who were endlessly generous with friendship has proven to be a real blessing to me. It's easy to take things for granted, even big things. It's nice to be able to say "thank you" to all of you who have and continue to be there for me.

See you at the meeting!

William Daugherty  
KX1Y

## Upcoming Events

TSRC Meeting	September 12, 2009, 9:00 am EBA's, Hanover, NH
TSRC Meeting	October 10, 2009, 9:00 am EBA's, Hanover, NH
Near-fest	October 16-17, 2009 Deefield, NH

## 2009 CROP WALK FOR HUNGER SPONSORED BY POST MILLS CON- GREGATIONAL CHURCH

The Post Mills Congregational church is organizing a CROP Walk again this year to raise money to fight global hunger. The walk will take place on Sunday, October 11, beginning at 2:00 PM at the church.

Roger and Martha Daum are the event organizers- Roger is pastor of the Post Mills and West Fairlee churches. This year's walk begins and ends at the Post Mills church on Rte 244 and is an easy six mile walk around Lake Fairlee.

The Twin State Radio Club has been asked again to provide the communications and safety support for the event. We have supported this effort for many years. The Net Control will be at the church in the downstairs kitchen and dining area. We are looking for five radio operators this year with one operator to assist at Net Control and four roving vehicles. As in the past we will be using APRS to track the walker's progress. and would

### Disclaimer

Opinions expressed in The Monitor are those of the individual authors and do not necessarily reflect the opinions or policies of The Twin State Radio Club, Inc.

like to have trackers in the roving units. Typically, we have one rover with Martha Daum, who is a nurse at the rear of the walkers and another rover at the head of the group. Other units include traffic safety on Rte 244 and spot checks at the SAGs. We do have to transport a few people back to the church each year for various reasons and our communications support aids in that process.

Usually, the walk is over by 5 PM and the church serves a great lunch for all!! If you can help on Sunday, October 11, just drop me a note and let me know what vehicle/equipment you have.

73, Bill WB1BRE- [william.burden@valley.net](mailto:william.burden@valley.net)

---

Here are some basic facts about CROP-

What does CROP stand for?

When CROP began in 1947 (under the wing of Church World Service, which was founded in 1946), the name was an acronym for the Christian Rural Overseas Program; its primary mission was to help Midwest farm families to share their grain with hungry neighbors in post-World War II Europe and Asia. Reflective of a program that for several decades has been both urban and rural, today CROP stands for Communities Responding to Overcome Poverty and identifies interfaith hunger education and fundraising events sponsored by Church World Service and organized by 21 CWS/CROP regional offices across the U.S.

In some CWS/CROP regions, CROP has come to mean Communities Reaching Out to People.

**\*\*Where do CROP Walk funds go?**

CROP Walks help to support the overall ministry of Church World Service, especially the grassroots, hunger-fighting development efforts of partner agencies in some 80 countries. CROP Walks help to provide tools of hope that empower people to meet their own needs. From seeds and tools, to wells and water systems, to technical training and micro-enterprise loans, the key is people working together to identify their own development priorities, their strengths and their needs -- something CWS has learned through some 60 years of working in partnership around the world.

In addition, each local CROP Hunger Walk can choose to return up to 25 percent of the funds it raises to local hunger-fighting programs.

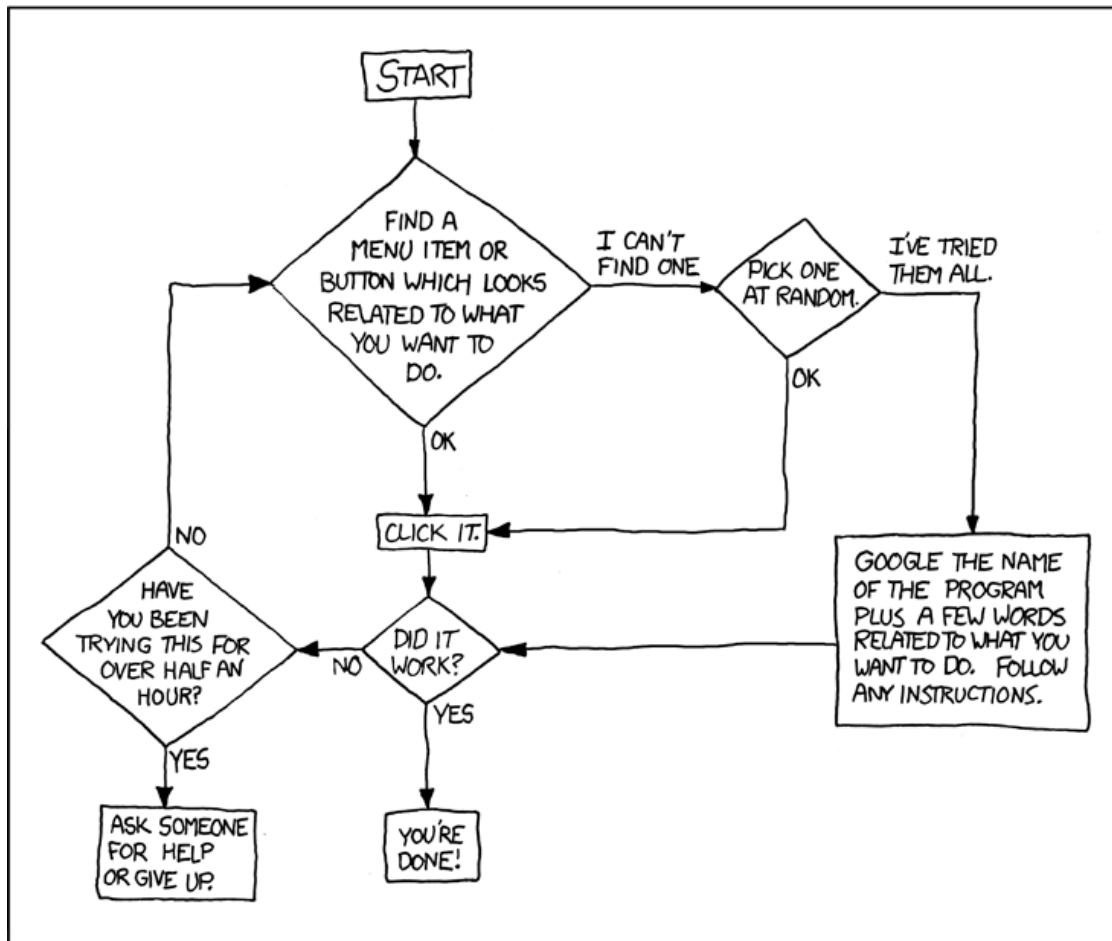
**\*\*How do CROP Hunger Walks help out here at home?**

This year CROP Walks will share nearly \$4 million with food banks, pantries, community gardens, and other local efforts nationwide. This support is made possible when local CROP Walks choose our unique option of returning up to 25 percent of what their CROP Walk raises to hunger-fighting programs in their own community.

□

DEAR VARIOUS PARENTS, GRANDPARENTS, CO-WORKERS,  
AND OTHER "NOT COMPUTER PEOPLE."

WE DON'T MAGICALLY KNOW HOW TO DO EVERYTHING IN EVERY  
PROGRAM. WHEN WE HELP YOU, WE'RE USUALLY JUST DOING THIS:



PLEASE PRINT THIS FLOWCHART OUT AND TAPE IT NEAR YOUR SCREEN.  
CONGRATULATIONS; YOU'RE NOW THE LOCAL COMPUTER EXPERT!

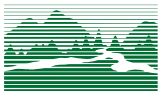
### CLUB OFFICERS

President: William Daugherty, KX1Y (603) 359-3745  
william@will-do.com  
VP: David McGaw, N1HAC david@endor.com  
Secretary: Bill Brown, KB1MOV  
bill.brown.tu78@alum.dartmouth.org  
Treasurer: Chuck Sherman N3WTO (802) 765-9630  
chuck.sherman@mac.com  
Trustee: Dave Landry KA1CRP (603) 448-5788  
daveka1crp@myfairpoint.net  
Editor: William Daugherty, KX1Y

### ELECTRONIC ADDRESSES

\*ARRL Website <http://www.arrl.org/>  
\*NH ARRL Home Page: <http://www.arrlnh.org/>  
\*Tom Frenaye K1KI-NE Div. Dir. k1ki@arrl.org  
\*Dale Drake, AA1QD, NH ACC aa1qd@arrl.net  
Part 97 <http://www.arrl.org/field/regulations/news/part97/>

Don't forget to check the TSRC Home Page!  
Make it your default start page!  
<http://www.w1fn.org>



Twin State Radio Club, Inc.  
PO Box 5078  
Hanover, NH 03755

Club email reflector:  
TSRC@mailman.qth.net  
subscribe at:  
<http://mailman.qth.net/mailman/listinfo/tsrc>